



## Application Note R200

Respiratory: Eosinophil; Inflammation; Adhesion Assay

## Introduction

Cellix Ltd. has developed a novel microfluidic platform consisting of a PC-controlled Mirus Evo nanopump with microfluidic biochips. The nanopump enables very accurate flow rates to be achieved which are more reproducible and consistent compared to anything currently available. Importantly, flow rates are extremely low ( $5 \text{ pL min}^{-1}$  to  $10 \text{ }\mu\text{L min}^{-1}$ ) and the shear stress levels that the pump can mimic (up to  $30 \text{ dyne/cm}^2$ ) are equivalent to those found in blood vessels *in vivo*. The Vena8 Fluoro+ biochips are comprised of eight microcapillaries and are manufactured such that the dimensions of the capillaries are similar to the blood vessels being assessed. Currently, the capillaries may be coated with recombinant human adhesion proteins for use in inflammation studies. The Mirus Evo nanopump is vital to the use of small diameter capillaries as standard syringe pumps are incapable of delivering the required low flow rates.

## Overview

First of all, the cell type to be analysed must be determined. This is followed by establishing how to harvest such cells e.g. culturing in growth media, or isolation from *in vivo* fluids. Secondly, the assay itself should be outlined, including what proteins will be used to coat the capillaries of the biochip. Thirdly, the adhesion profile of the cells to be passed through the coated capillary should be determined. Next, if exogenous compounds are being analysed, these should then be introduced to the system and their effect on the

adhesion profile assessed. This should include calculation of required concentrations and pre-incubation conditions, before introduction to the system. Finally, the images taken via the digital camera attached to the microscope should be masked and analysed using the Image Pro Premier software.

## Methods

### 1. Choice of Cell Type and Harvesting Protocols

A microfluidic assay assessing the effect of levocetirizine on human eosinophil adhesion was developed. Human eosinophils were obtained from blood donated by normal volunteers, or individuals with mild allergic disease who were not taking any medication and who gave informed consent (eosinophilia  $<0.5 \times 10^6$  eosinophils  $\text{ml}^{-1}$ ).

### 2. Assay Outline, Including Vena8 Biochip Coating Procedures

Vena8 Fluoro+ biochip was coated for 1 h in humid conditions at ambient temperature with either rhVCAM-1 or BSA (both  $10 \text{ }\mu\text{g mL}^{-1}$  in HBSS containing  $\text{Ca}^{2+}$  and  $\text{Mg}^{2+}$ ). All capillaries were then coated with BSA to occupy non-specific binding sites. Resting or GM-CSF-treated eosinophils were pre-incubated at  $37^\circ\text{C}$  in a water bath for 10 mins before incubation with/without levocetirizine ( $0.1\text{--}100 \text{ nM}$ ), with anti-VLA-4 mAb as a positive control for a further 20 mins.

### 3. Adhesion Profiles

Eosinophils were infused into the capillaries at stepwise increases in shear stress, from 0 to  $5 \text{ dyne/cm}^2$ , 1 min per shear stress level. Images at each shear

stress level were captured using the accompanying PixelINK microscopy software. For experiments with GM-CSF-stimulated ( $1 \text{ ng mL}^{-1}$ ) eosinophils, the cytokine was added to the warmed cells at the same time as levocetirizine and incubated at  $37^\circ\text{C}$  for 20 mins prior to commencing the flow assay. Adhesion was evaluated by monitoring eosinophil migratory behaviour in real time with images captured via a digital camera connected to the microscope using VenaFlux assay software.

#### 4. Image Analysis

Three images per shear stress level were captured (see figure 1 for examples), and adhered eosinophil numbers were recorded using Image Pro Premier software. Data was exported into Excel for interpretation. Statistical significance was determined by Students unpaired t-test, and  $P > 0.05$  was considered statistically significant. Data was presented as  $\text{mean} \pm \text{SEM}$ .

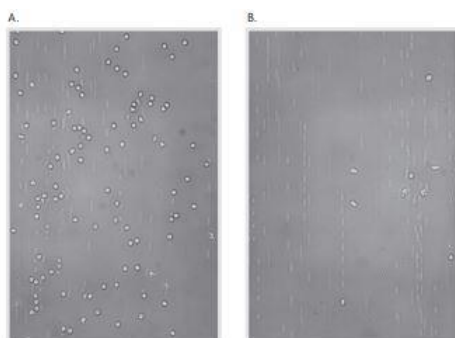


Figure 1

Figure 1: Microscope images (20x magnification) showing resting eosinophil adhesion to (a) rhVCAM-1 ( $10 \mu\text{g mL}^{-1}$ ) and (b) BSA ( $10 \mu\text{g mL}^{-1}$ ), both at  $1 \text{ dyne/cm}^2$ .

Cells were pre-incubated in  $\text{Ca}^{2+}/\text{Mg}^{2+}$ -containing HBSS for 30 mins at  $37^\circ\text{C}$ , including 20 mins pre-incubation with inhibitors where necessary, before being passed through the biochip capillary ( $400 \mu\text{m}$  wide,  $100 \mu\text{m}$  deep).

## Results

We examined the effect of a concentration range of levocetirizine on GM-CSF-stimulated ( $10 \text{ ng mL}^{-1}$  — optimal concentration established in preliminary experiments) eosinophil adhesion under flow to rhVCAM-1. Pre-incubation of eosinophils with GM-CSF increased the adhesion level by more than 50%, and also rapidly generated significantly more flattened cells at both the 5 and 15 min time-points. Levocetirizine significantly inhibited GM-CSF stimulated eosinophil adhesion to VCAM-1 and the ability of eosinophils to flatten on rhVCAM-1, in a dose-dependent manner, at both 5 min and 15 min. The data are summarized in Figure 2, with optimal inhibition of adhesion observed at a levocetirizine concentration of  $10^{-8} \text{ M}$  with an  $\text{EC}_{50}$  of  $10^{-9} \text{ M}$ . However, a greater effect on GM-CSF-dependent eosinophil flattening was observed at 15 min. Pre-treatment of GM-CSF-stimulated eosinophils with a CD11b mAb had no measurable effect (data not shown).

## Assay Conditions

The following solutions were used during the above procedure:

Eosinophil Isolation Media  
HBSS without  $\text{Ca}^{2+}$  and  $\text{Mg}^{2+}$   
10% FCS

100 U penicillin/0.1 mg streptomycin

Note: incubate eosinophils at  $5 \times 10^6 \text{ ml}^{-1}$  in the adhesion media for at least 30 mins before commencing the assay. Also, dissolve eosinophil stimulants/inhibitors in this media.

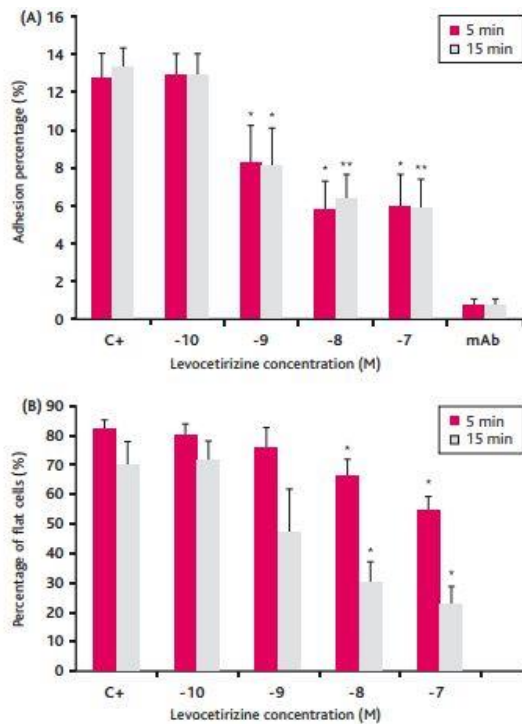
of mean) of at least four independent experiments. mAb denotes anti-VLA-4. \* $P < 0.05$ , \*\* $P < 0.005$  vs. GM-CSF-stimulated cells (C+).

## References

Blaylock, M.G., Sexton, D.W., & Walsh, G.M (1999). Ligation of CD45 and the isoforms CD45RA and CD45RB accelerates the rate of constitutive apoptosis in human eosinophils. *J Allergy Clin Immunol*, 104, 1244-50.

Wu, P., Mitchell, S., & Walsh, G.M. (2005). A new antihistamine levocetirizine inhibits eosinophil adhesion to vascular cell adhesion molecule-1 under flow conditions. *Clin. Exper. Allergy*, 35, 1073-1079.

Williams, V., Kashanin, D., Shvets, I.V., Mitchell, S., Volkov, Y., & Kelleher, D. (2002). Microfluidic enabling platform for cell-based assays. *J. Assoc. Lab. Automation*, 7, 135-141.



**Figure 2**

Figure 2: (a) Dose response of the effect of levocetirizine on granulocyte macrophage-colony stimulating factor (GM-CSF)-stimulated eosinophil adhesion to rhVCAM-1 under flow at 5 and 15 min after the start of the flow assay. Data are from cell counts of 50 fields of view for each microchannel; (b) effect of increasing concentrations of levocetirizine on GM-CSF-dependent eosinophil flattening between the 5 and 15 min time-points of the flow assay. In a and b, each bar represents the mean  $\pm$  SEM (standard error

©2018 Cellix Limited. All rights reserved.